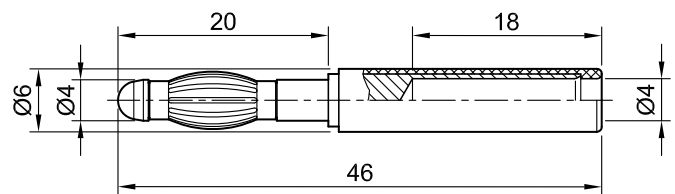


# LS410-I



## Item number 22.5163-\*

Ø 4 mm plug, made of brass, with spring-loaded MULTILAM. Ø 4 mm rigid socket in insulator accepting spring-loaded Ø 4 mm plugs with rigid insulating sleeve.

Technical data	
Diameter of plug system	4 mm
Rated Values	30 V, 30 A / 60 V, 30 A
Surface treatment electrical contact	Ni
Base material electrical contact	CuZn
Standard color(s) *	<span style="background-color: black; color: white; padding: 2px;">21</span> <span style="background-color: red; color: white; padding: 2px;">22</span>
Test accessory acc. to	IEC EN 61010-031
User-Information	I 098