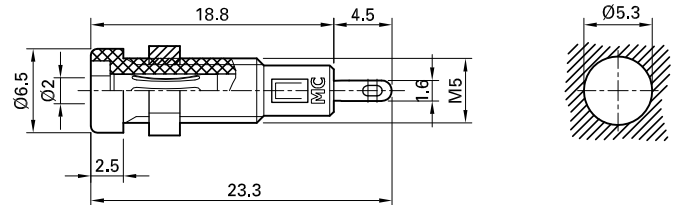
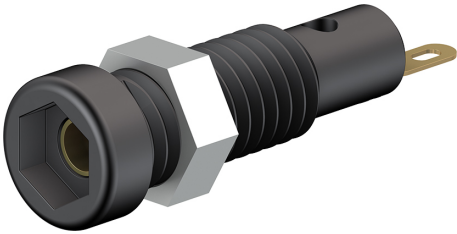


# LB2-IF



Item number 23.0050-\*

Insulated, Ø 2 mm with spring-loaded MULTILAM. The socket can be screw-mounted in predrilled panels. Solder connection.

Technical data	
Diameter of plug system	2 mm
Rated Values	30 V, 10 A / 60 V, 10 A
Surface treatment electrical contact	Au
Base material electrical contact	CuZn
Standard color(s) *	<span style="background-color: black; color: white; padding: 2px;">21</span> <span style="background-color: red; color: white; padding: 2px;">22</span> <span style="background-color: blue; color: white; padding: 2px;">23</span> <span style="background-color: yellow; color: black; padding: 2px;">24</span> <span style="background-color: green; color: white; padding: 2px;">25</span>
Thread	M5
Test accessory acc. to	IEC EN 61010-2-030
Component parts	BI-LB2-IF; MU/M5