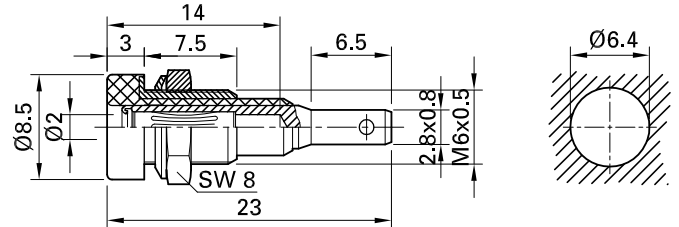
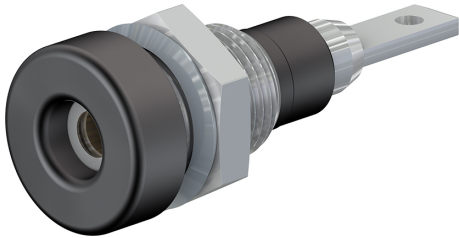


LB-IF2R



Item number 23.0060-*

Insulated, $\varnothing 2$ mm with spring-loaded MULTILAM. Machined brass. Metal thread jacket on the insulation. The socket can be screw-mounted in predrilled panels. Flat connecting tab 2.8 mm x 0.8 mm.

Technical data	
Diameter of plug system	2 mm
Rated Values	30 V, 10 A / 60 V, 10 A
Surface treatment electrical contact	Optalloy
Base material electrical contact	CuZn
Standard color(s) *	20 21 22 23 24 25 26 27 28 29
Thread	M6x0,5
Test accessory acc. to	IEC EN 61010-2-030
Component parts	BI-LB-IF2R; MU/M6x0,5; SP2
Remarks	Accessories: Flat connecting receptacle FSH2,8x0,8