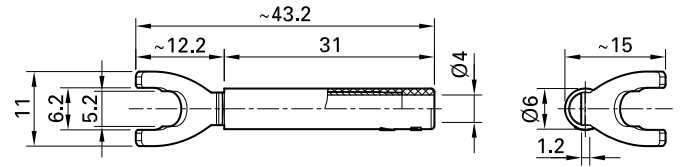
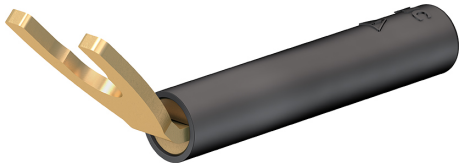


# B4-I/KA



Item number 23.0440-\*

Made of brass for permanent installation, e.g. for connecting screw terminals.  $\varnothing$  4 mm rigid socket in insulator accepting spring-loaded  $\varnothing$  4 mm plugs with rigid insulating sleeve. Fork lug bent to an angle of 45°.

Technical data	
Diameter of plug system	4 mm
Rated Values	1000 V, CAT II, 20 A
Surface treatment electrical contact	Au
Base material electrical contact	CuZn
Standard color(s) *	<span style="background-color: black; color: white; padding: 2px;">21</span> <span style="background-color: red; color: white; padding: 2px;">22</span> <span style="background-color: blue; color: white; padding: 2px;">23</span> <span style="background-color: yellow; color: black; padding: 2px;">24</span>
Test accessory acc. to	IEC EN 61010-031
User-Information	I011
Approvals	CE