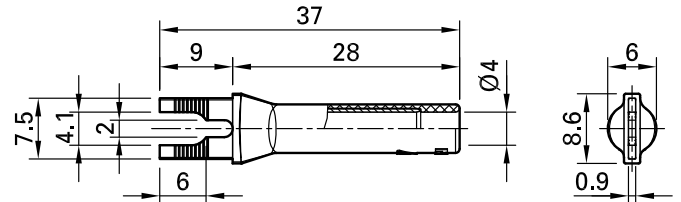
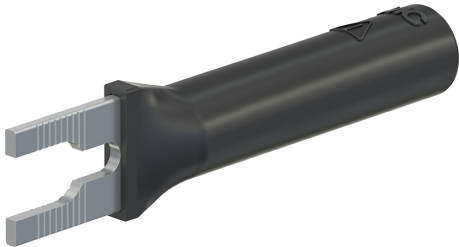


# B4-I/KS



Item number 23.0480-\*

Made of brass for permanent installation, e.g. for connecting screw terminals. Ø 4 mm rigid socket in insulator accepting spring-loaded Ø 4 mm plugs with rigid insulating sleeve. Fork lug can be bent once to 90°.

Technical data	
Diameter of plug system	4 mm
Rated Values	1000 V, CAT II, 20 A
Surface treatment electrical contact	Ni
Base material electrical contact	CuZn
Standard color(s) *	21 22 23 24
Test accessory acc. to	IEC EN 61010-031
User-Information	I 011
Approvals	CE