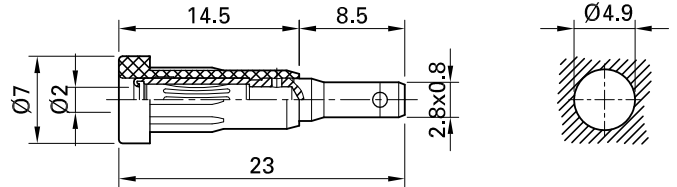


EB2-F



Item number 23.1021-*

Insulated, Ø 2 mm, spring-loaded with MULTILAM. Machined brass. The socket is pressed into predrilled panels of plastic, metal etc. Flat connecting tab 2.8 mm x 0.8 mm.

Technical data	
Diameter of plug system	2 mm
Rated Values	30 V, 10 A / 60 V, 10 A
Surface treatment electrical contact	Optalloy
Base material electrical contact	CuZn
Standard color(s) *	21 22
Optional color(s)	20 23 24 25 26 27 28 29
Component parts	I-EB2; B-EB2-F
Remarks	Accessories: MB2; Flat connecting tab FSH2,8x0,8