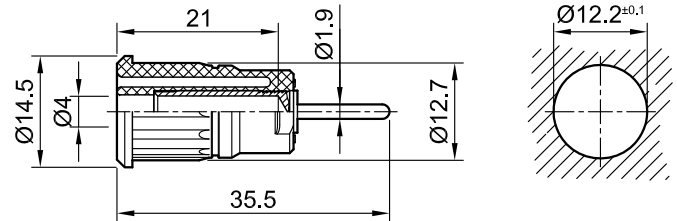


# SEB4-R



Item number 23.3130-\*

Insulated, rigid, Ø 4 mm, accepting spring-loaded Ø 4 mm plugs with rigid insulating sleeve. Machined brass. Insulation material UL94 V-0. The socket is pressed into pre-drilled panels of plastic, metal, etc. Round connecting pin Ø 1.9 mm.

Technical data	
Diameter of plug system	4 mm
Rated Values	1000 V, CAT III, 32 A / 600 V, CAT IV, 24 A
Surface treatment electrical contact	Au
Base material electrical contact	CuZn
Standard color(s) *	<span style="background-color: #ffff00; border: 1px solid black; padding: 2px;">20</span> <span style="background-color: #ff0000; border: 1px solid black; padding: 2px;">21</span> <span style="background-color: #ff00ff; border: 1px solid black; padding: 2px;">22</span> <span style="background-color: #0000ff; border: 1px solid black; padding: 2px;">23</span> <span style="background-color: #ffff00; border: 1px solid black; padding: 2px;">24</span> <span style="background-color: #00ff00; border: 1px solid black; padding: 2px;">25</span> <span style="background-color: #ff0000; border: 1px solid black; padding: 2px;">27</span> <span style="background-color: #cccccc; border: 1px solid black; padding: 2px;">28</span> <span style="background-color: #cccccc; border: 1px solid black; padding: 2px;">29</span>
Test accessory acc. to	IEC EN 61010-2-030
Remarks	Accessories: Press-in tool MB4-S
Approvals	UR