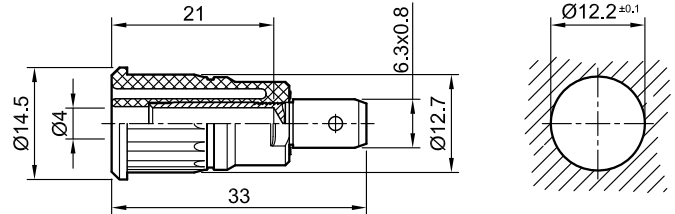


SEB4-F/6,3



Item number 23.3150-*

Insulated, rigid, Ø 4 mm, accepting spring-loaded Ø 4 mm plugs with rigid insulating sleeve. Machined brass. Insulation material UL94 V-0. The socket is pressed into pre-drilled panels of plastic, metal, etc. Flat connecting tab 6.3 mm x 0.8 mm.

Technical data	
Diameter of plug system	4 mm
Rated Values	1000 V, CAT III, 32 A / 600 V, CAT IV, 32 A
Surface treatment electrical contact	Au
Base material electrical contact	CuZn
Standard color(s) *	20 21 22 23 24 25 27 28
Optional color(s)	29
Test accessory acc. to	IEC EN 61010-2-030
Remarks	Accessories: Flat connecting receptacles FSH6,3x0,8; Press-in tool MB4-S
Approvals	UR