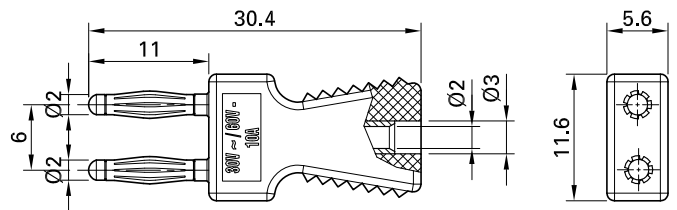
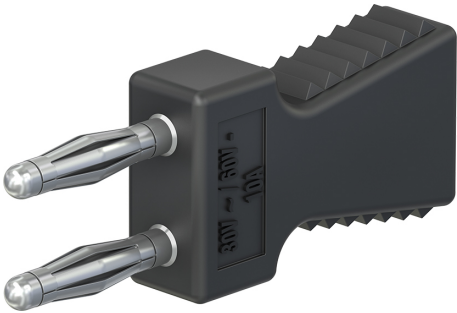


KS2-6L/N



Item number 63.9353-*

Insulated, Ø 2 mm, with rigid Ø 2 mm socket in handling part.

Technical data	
Diameter of plug system	2 mm
Rated Values	30 V, 10 A / 60 V, 10 A
Surface treatment electrical contact	Ni
Base material electrical contact	CuZn
Standard color(s) *	21 22
Optional color(s)	23 24 25 28 29
Plug spacing	6 mm
Suitable for	BL2-6/20/A
Test accessory acc. to	IEC EN 61010-031