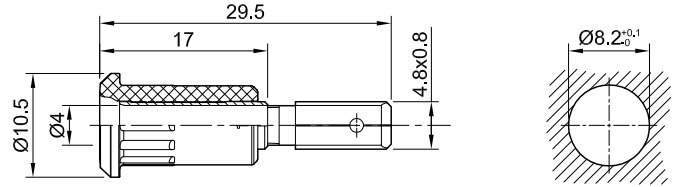


EB4-IFA/N



Item number 64.3013-*

Insulated, Ø 4 mm, rigid. Brass sheet, punched and rolled. The socket is pressed into predrilled panels of plastic, metal etc. Flat connecting tab 4.8 mm x 0.8 mm, can be bent to 90° once only.

Technical data	
Diameter of plug system	4 mm
Rated Values	30 V, 25 A / 60 V, 25 A
Surface treatment electrical contact	Ni
Base material electrical contact	CuZn
Standard color(s) *	20 21 22 23 24 25 26 27 28 29
Component parts	I-EB4-IFA; B-EB4-B