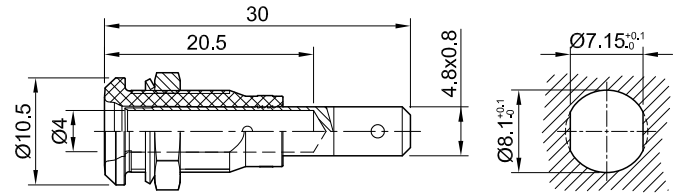
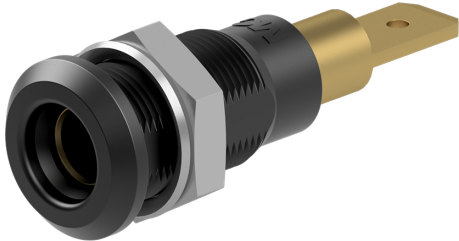


# LB4H-IF/A



Item number 64.3040-\*

Insulated, Ø 4 mm, rigid. Machined brass. The socket can be screw-mounted in predrilled panels. Flat connecting tab 4.8 mm x 0.8 mm.

Technical data	
Diameter of plug system	4 mm
Rated Values	30 V, 25 A / 60 V, 25 A
Surface treatment electrical contact	Au
Base material electrical contact	CuZn
Standard color(s) *	<span style="background-color: #206294; color: white; padding: 2px;">20</span> <span style="background-color: #000000; color: white; padding: 2px;">21</span> <span style="background-color: #C00000; color: white; padding: 2px;">22</span> <span style="background-color: #0000FF; color: white; padding: 2px;">23</span> <span style="background-color: #FFD700; color: black; padding: 2px;">24</span> <span style="background-color: #008000; color: white; padding: 2px;">25</span> <span style="background-color: #800080; color: white; padding: 2px;">26</span> <span style="background-color: #A0522D; color: white; padding: 2px;">27</span> <span style="background-color: #808080; color: white; padding: 2px;">28</span> <span style="background-color: #FFFFFF; color: black; padding: 2px;">29</span>
Thread	M8x0,5
Component parts	BI-LB4x-IF/A
Supplied assembly material	MU/M8x0,5