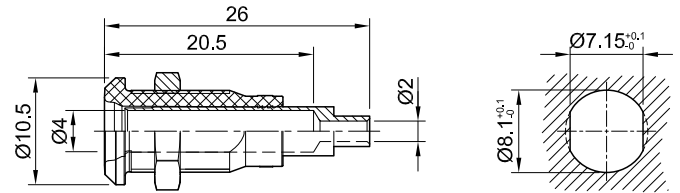


# LB4H-IE/N



Item number 64.3042-\*

Insulated, Ø 4 mm, rigid. Machined brass. The socket can be screw-mounted in predrilled panels. Solder connection.

Technical data	
Diameter of plug system	4 mm
Rated Values	30 V, 25 A / 60 V, 25 A
Surface treatment electrical contact	Ni
Base material electrical contact	CuZn
Standard color(s) *	<span style="background-color: #008000; color: white; padding: 2px;">20</span> <span style="background-color: #800000; color: white; padding: 2px;">21</span> <span style="background-color: #FF0000; color: white; padding: 2px;">22</span> <span style="background-color: #0000FF; color: white; padding: 2px;">23</span> <span style="background-color: #FFFF00; color: black; padding: 2px;">24</span> <span style="background-color: #008080; color: white; padding: 2px;">25</span> <span style="background-color: #800080; color: white; padding: 2px;">26</span> <span style="background-color: #FFA500; color: white; padding: 2px;">27</span> <span style="background-color: #A9A9A9; color: white; padding: 2px;">28</span> <span style="border: 1px solid black; padding: 2px;">29</span>
Thread	M8x0,5
Component parts	BI-LB4x-IE/N
Supplied assembly material	MU/M8x0,5