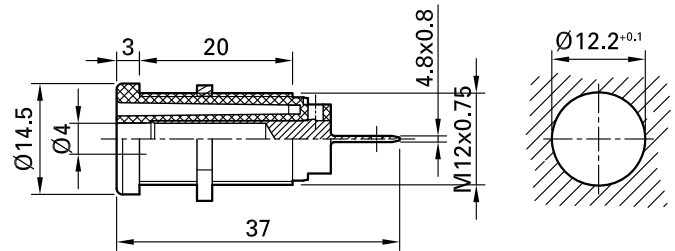
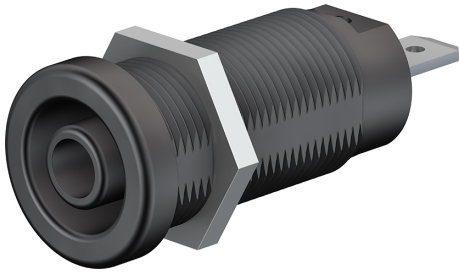


XEF-1R



Item number 66.9665-*

Insulated, rigid, Ø 4 mm, accepting spring-loaded Ø 4 mm plugs with rigid insulating sleeve. Machined brass. The sockets are screwed into predrilled panels of plastic, metal, etc. Flat connecting tab 4.8 mm × 0.8 mm.

Technical data	
Diameter of plug system	4 mm
Rated Values	1000 V, CAT IV, 24 A
Surface treatment electrical contact	Ni
Base material electrical contact	CuZn
Standard color(s) *	20 21 22 23 24 25 26
Optional color(s)	29
Thread	M12x0,75
Test accessory acc. to	IEC EN 61010-2-030
Supplied assembly material	GEW.12-MUTTER
Remarks	Accessories: Flat connecting receptacle FSH4,8x0,8; Tube spanner SS2
Approvals	UR